



Product Service

CERTIFICATE

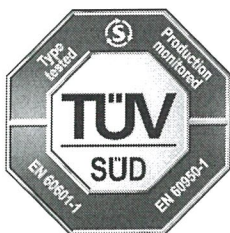
No. Z2 17 12 13890 02902

Holder of Certificate: **Astec International Ltd.**

16th Floor, Lu Plaza, 2 Wing Yip Street
Kwun Tong
Kowloon
HONG KONG



Certification Mark:



Product: **Switching power supply unit
(Switching Power Supply)**

The product was tested on a voluntary basis and complies with the essential requirements. The certification mark shown above can be affixed on the product. It is not permitted to alter the certification mark in any way. In addition the certification holder must not transfer the certificate to third parties. See also notes overleaf.

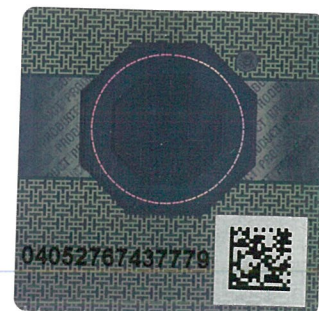
Test report no.: 682701600207

Valid until: 2020-12-19

Date, 2017-12-13

(Signature)
(Yager Bi)

Page 1 of 3





Product Service

CERTIFICATE
No. Z2 17 12 13890 02902

Model(s): 73-936-0048, 73-936-0125, 73-936-0080, 73-936-0024,
 73-936-0250, 73-936-0012, 73-936-0200, 73-936-0032

Parameters:

Rated Input :	395±5VDC, 8.5A
Rated Output :	For model 73-936-0048: +48VDC, 62.5A Max., 3000W Max. For model 73-936-0125: +125VDC, 24A Max., 3000W Max. For model 73-936-0080: +80VDC, 37.5A Max., 3000W Max. For model 73-936-0024: +24VDC, 120A Max., 2880W Max. For model 73-936-0250: +250VDC, 12A Max., 3000W Max. For model 73-936-0012: +12VDC, 200A Max., 2400W Max. For model 73-936-0200: +200VDC, 15A Max., 3000W Max. For model 73-936-0032: +32VDC, 90A Max., 2880W Max. or +36VDC, 83.33A Max., 3000W Max.
Construction :	Built-in
Protection Class :	I
Degree of Protection :	IPX0
Remarks:	See page 3 for details

Tested according to: EN 60601-1:2006/A1:2013
 EN 60950-1:2006/A2:2013

Production Facility(ies): 28532, 62777



CERTIFICATE No. Z2 17 12 13890 02902

Remarks:

1. When installing these equipments, all requirements of the mentioned standard must be fulfilled.
2. Refer to the installation and operating instruction from manufacturer for the details of loading condition and operating temperature.
3. Clearance was evaluated for operating altitude up to 3000m above sea level.
4. These power supplies contain output exceeding 240VA, when installing into end system, care must be taken that the output and associated wire(s) may not be touched.
5. Models 73-936-0125, 73-936-0080, 73-936-0250 and 73-936-0200: The output voltage of this power supply considered as hazardous voltage, when installing into end system, the output and associated wires should not be touched.
6. Built-in type equipment, suitable enclosure should be provided in end system.
7. These power supplies have been evaluated according to EN 60601-1:2006/A1:2013 with the following conditions:
 - The output was not evaluated as patient connected circuits.
 - Compliance with the requirements for EMC shall be evaluated for the end use product.
 - These power supplies have been investigated only as a component part for use in equipment where the suitability of the combination is subject to end product investigation.
 - These power supplies are designed to be protectively earthed. Earthing connection and continuity test shall be checked in end product.
 - These power supplies must be installed in accordance with the instruction manual.
 - The leakage current test shall be checked in end product.
 - The risk management requirements of the standard were not addressed.
 - Clearance/creepage distance and dielectric strength were evaluated and fulfilled the requirements for MOPP.